



One week's use of a synchronous electric clock will demonstrate why America has almost over night turned to the *synchronous* electric clock as a source of accurate time. No other method is as convenient, trouble-free, dependable and as accurate. Constant regulation by the electricity that comes from the light socket is the secret of the uncanny accuracy. Of course there is no winding.

Since America has turned to electric clocks, so have the best designers, and their efforts are exemplified in the beautiful case designs shown here.

The Hammond Clock Company manufactures two types of electric clocks, i. e. *synchronous* and *Bichronous*. This circular describes the synchronous type.

Hammond synchronous electric clocks are regulated by the pulsations (frequency) of the alternating current. Most power companies regulate the pulsations of the current so that synchronous electric clocks tell off exact time.

All models are designed to operate on 80 to 135 volts alternating current. Sixty cycle current is the kind most commonly used. If any other frequency is used in your neighborhood, your dealer can give you the information and can supply special models.

The current consumed is two watts and costs less than ten cents a month.

The Hammond Synchronous Electric Clock is manufactured in the U. S. A. under patent Nos. 1,719,895, RE 17,779 and applications.

Hammond *Bichronous* clocks operate on the synchronous principle but also continue to run without electricity for periods as long as 30 minutes. Thus they are not affected by current interruptions. This feature is exclusive to the Hammond Bichronous clock—priced \$14.50 to \$30.00. Circular on request.

The
HAMMOND CLOCK
& Company

2915 N. WESTERN AVENUE
CHICAGO, ILL.



Electric seconds
from the
light socket

The Modern Home is Electrically Timed



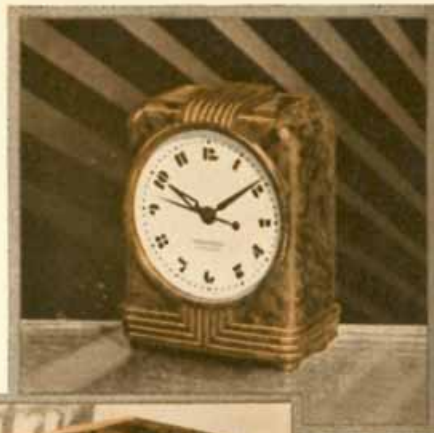
GREGORY—Tells day and date. Case is bakelite, choice of black with silver finished dial, or walnut color with buff dial. Size 6 $\frac{1}{2}$ " high, 5 $\frac{1}{4}$ " wide, 2 $\frac{3}{4}$ " deep. Price. . . . \$12.50

What has attracted the millions of buyers of electric clocks? Perhaps it was the novelty—the fascination of telling time by electric pulsations from the light socket. But familiarity with synchronous electric clock accuracy fosters an entirely different feeling. A user never questions the accuracy—never asks the question, "Is that clock right?" When one not acquainted with electric clock dependability asks the question, the answer is always, "Of course, it's electric."

Enjoy this wonderful feeling of time dependability that can come only through the possession of a Hammond Electric.

HAMMOND Synchronous ELECTRIC CLOCKS

BEACON—Modern design, bakelite case—black or walnut color; 4 $\frac{3}{4}$ " high, 3 $\frac{1}{2}$ " wide, 2" deep. Dial diameter 2 $\frac{3}{4}$ ". Price. . . . \$3.50



KITCHEN SERIES—Metal case, choice of white, blue, green, yellow or brown. Sealed convex crystal. Case 8 $\frac{1}{2}$ " wide; dial 5" in diameter. . . . \$7.50



LOGAN—Walnut colored bakelite case; recessed buff dial; gold finished second hand. Case 4 $\frac{3}{4}$ " high; 4" wide; 2 $\frac{1}{2}$ " deep. . . \$6.75 With electric buzzer alarm. . . \$7.75



GARLAND—Junior size kitchen model. Metal case, available in white, green or blue. Width of case 5 $\frac{1}{2}$ "; dial diameter 4 $\frac{1}{4}$ ". convex crystal. Price. . . . \$4.75



OAKWOOD—Walnut colored bakelite case; recessed buff dial; gold finished second hand. Case 6 $\frac{3}{4}$ " high, 5" wide overall, 2 $\frac{3}{4}$ " deep. Price. . . . \$8.75